

Sample 5

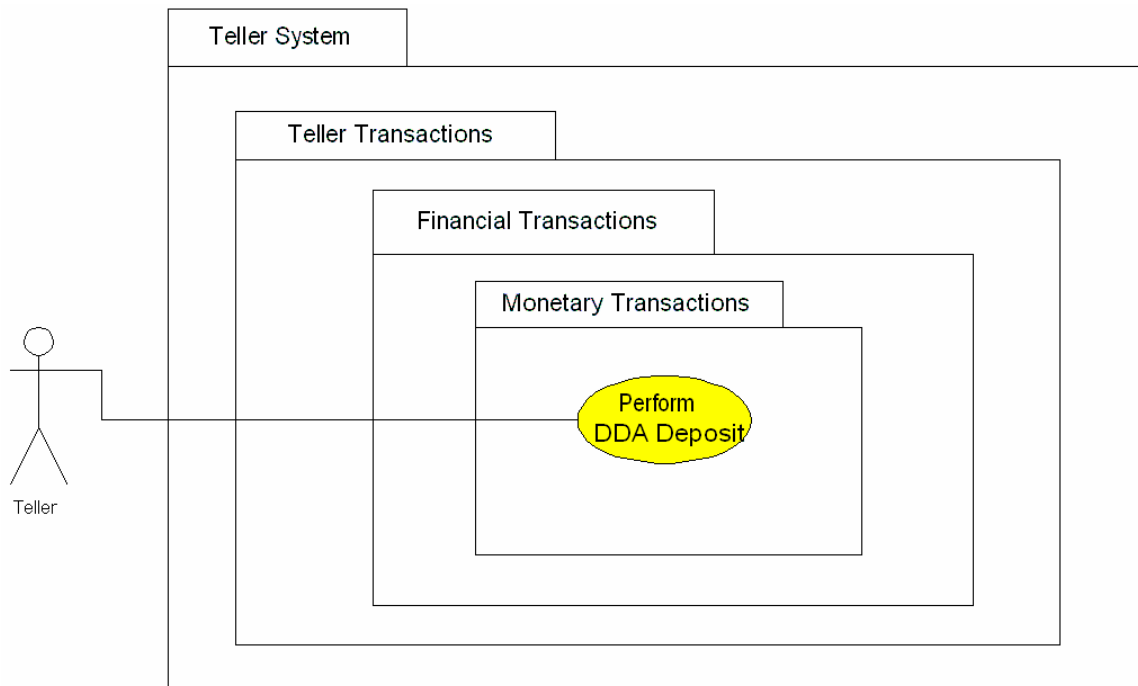
Teller Use Case: Perform DDA Deposit

1.0 Description

Tellers use this transaction to deposit checks and cash into a DDA account. The transaction is performed in Customer Session.

The transaction is assigned to tellers as a single Business Center function. It handles all DDA deposits – including deposits with checks and/or cash, cash back and balance forward amounts from other transactions in this Customer Session.

The transaction is normally processed online, but can be processed offline and marked for forwarding when the system is back online.



2.0 Display

Below is the Teller Home Page. The transaction window on the left shows the DDA Deposit display. Common features are described in the Teller Home Page specification.

The screenshot displays the First National Bank Teller Home Page. The main window is titled "DDA Deposit - Tran ID 111" and contains the following fields and controls:

- Bal Fwd: 750.00
- Account: 732522222
- Check(s): [] with a "Check Calculator" button.
- Cash In: [] with a "\$ Denom. Calculator" button.
- Cash Out: 50.00
- Dep Amt: 500.00
- New Bal Fwd: 200.00
- New Account? Immediate Credit?

Navigation links at the bottom of the transaction window include: [Submit](#) transaction, [End](#) cust session, [Cancel](#) transaction, [Clear](#) fields, and [Reprint](#) last transaction.

The "Customer Session 1 - continued" section shows a "Journal" table with the following data:

| Seq # | Sess # | Type | Amount | Account # | Date | Time | Detail |
|-------|--------|----------------|--------|-----------|-----------|--------|--------|
| 3 | 1 | DDA Dep | 500.00 | 732422222 | 5/31/2001 | 9:11 A | |
| 2 | 1 | On-Us Csh Chk | 750.00 | 055618331 | 5/31/2001 | 9:10 A | |
| 1 | | Beg Day Signon | | | 5/31/2001 | 9:00 A | |

To the right of the journal table is an "Options" panel for the selected transaction (Seq # 3):

- Customer: Francis Wright
- Cashin: 0.00
- Cashout: 50.00
- Bal Fwd: 200.00
- Sort Type: 4
- Next Day: No

At the bottom of the page, there is a status bar with the text "111 tweathers", a "Select next transaction or Action" prompt, and a timestamp "07/25/2001 09:06:49".

2.1 Fields

| Label | Min - Max | Type | Description |
|-------------|------------------|----------------|---|
| Bal Fwd | Min 0 Max 10 | Monetary cents | Display Only - Amount returned from previous transaction in Customer Session. |
| New Bal Fwd | Min 0 Max 10 | Monetary cents | Display Only - Amount forwarded from this transaction to the next transaction in Customer Session (or to the End Customer transaction – see Common Transaction Features specification). |
| Account | Min 10 Max 10 | Alphanumeric | DDA account number. |
| Check(s) | Min 0 Max 10 | Monetary cents | The check component, if any, of the deposit. When entering multiple checks, the Check Calculator (see Common Transaction Features specification) is used to add checks and calculate float. Also appears if the Check Calculator threshold is exceeded. |

| | | | |
|--------------------|-----------------|----------------|--|
| Cash In | Min 0 Max 10 | Monetary cents | The cash component, if any, of the deposit. If the Denomination Calculator threshold is exceeded, the Denomination Calculator (see Common Transaction Features specification) appears. |
| Cash Out / DDW= | Min 0 Max 10 | Monetary cents | The cash returned to the customer. |
| Dep Amt | Min 0 Max 10 | Monetary cents | The amount of the deposit. |
| New Account? | N/A | Boolean | If “yes” indicates that this is a new account. |
| Immediate Credit? | N/A | Boolean | If “yes” indicates that the deposit is to be immediately credited to the account. |

3.0 Flow

This flow is implemented by the Transaction Processing Cycle (TPC) component (see design document for details). The flow starts when the Teller selects the transaction and ends when the ticket is printed (or the transaction is aborted).

3.1 Start

The teller selects the transaction using one of standard techniques (see Teller Home Page specification).

3.2 Customer Session

1. The TPC checks to see if this is the first transaction in a Customer Session. If it is, the processing flow links to the non-display Begin Customer transaction, where any special processing required at that time is performed. Afterward, the flow links back to this transaction.
2. If already in Customer Session, the TPC calculates the balance forward, if any, and passes it to transaction, which displays it in Bal Fwd field.

3.3 As Data is Entered

These rules are applied as the indicated fields lose focus:

- **Account** – The transaction launches the Acct and Customer Profile Search function (see Common Transaction Features specification). Information returned by the function is displayed in the Customer Information section of the Teller Home Page. Depending on conditions, sales prompts might also appear (see Teller Home Page specification).
 - **Check(s)**– If the amount entered exceeds the Checks Calculator Threshold, the Check Calculator (see Common Transaction Features specification) is launched.
 - **Cashin** – If the amount entered exceeds the Cashin Denomination CalcThreshold, the Denomination Calculator (see Common Transaction Features specification) is launched.
- Note:** Both these calculators can be manually selected using the buttons indicated on the display.

3.4 After Data is Entered

These rules are applied when the teller submits the transaction using on the standard techniques (see Teller Home Page specification). The rules are used to perform inter-field editing, check privileges, transmit and receive host messages, etc.

3.4.1 – Perform Inter-Field Editing

The following code (from the prototype) describes rules that apply to all fields in combination. “postDataEntry_text” indicates messages displayed in transaction message section of transaction window. “return false” indicates the operator must resubmit the transaction. “return true” indicates that the transaction shall proceed to the next step in the flow.

```
function DDAInterFieldEdits()
{
if (flds_used == '')
    {postDataEntry_text = "Enter at least the minium required
fields.";return false;}
    else
        if (account == '')
            {postDataEntry_text = "The account field is always
required.";return false;}
        else
            if (flds_used == 'daco'
                || flds_used == 'da'
                || flds_used == 'ci'
                || flds_used == 'bf'
                || flds_used == 'co')
                {postDataEntry_text = "Enter at least one other amount-in field. ";
return false;}
            else
                if (total_amt < 0)
                    {postDataEntry_text = "Cashout exceeds deposit"; return false;}
                else
                    if (flds_used == "bfckcicoda" && total_amt != dep_amt
                        || flds_used == "ckcicoda" && total_amt != dep_amt)
                        {postDataEntry_text = "The entries in all these fields must
balance.";return false;}
                    else
                        // Assume Deposit, Cash In, Checks or New Bal Fwd - based on entries
                        if (flds_used == 'ck' || flds_used == 'bfck')
                            {
                                dep_amt = total_amt;
                                postDataEntry_text = "Assume Deposit";
                                return true}
                        else
                            if(flds_used == "ckda" && dep_amt > checks)
                                {
                                    cash_in = dep_amt-checks;
                                    postDataEntry_text = "Assume Cash In";
                                    return true}
                            else
                                if(flds_used == "bfckda" && dep_amt > total_amt)
                                    {
                                        cash_in = dep_amt-total_amt;
                                        postDataEntry_text = "Assume Cash In";
                                        return true}
                                else
                                    if(flds_used == "ckda" && dep_amt < checks)
                                        {
                                            new_bal_fwd = checks-dep_amt;
                                            postDataEntry_text = "Assume New Bal Fwd";
                                            return true}
                                    else
                                        if(flds_used == "bfckda" && dep_amt < total_amt)
                                            {
                                                new_bal_fwd = total_amt-dep_amt;
                                                postDataEntry_text = "Assume New Bal Fwd";
                                                return true}
                                        else
                                            if(flds_used == "cida" && dep_amt > cash_in)
                                                {
                                                    checks = dep_amt-cash_in;
                                                    postDataEntry_text = "Assume Checks";
                                                    return true}
                                                else
                                                    if(flds_used == "bfcida" && dep_amt > total_amt)
                                                        {
                                                            checks = dep_amt-total_amt;
                                                            postDataEntry_text = "Assume Checks";
                                                            return true}
                                                        else
                                                            if(flds_used == "cida" && dep_amt < cash_in)
                                                                {
                                                                    new_bal_fwd = cash_in-dep_amt;
                                                                    postDataEntry_text = "Assume New Bal Fwd";
                                                                    return true}
                                                                else
                                                                    if(flds_used == "bfcida" && dep_amt < total_amt)
                                                                        {
                                                                            new_bal_fwd = total_amt-dep_amt;
                                                                            postDataEntry_text = "Assume New Bal Fwd";
                                                                            return true}
                                                                        else
                                                                            if(total_amt > dep_amt && dep_amt != '')
```

```
        {           new_bal_fwd = total_amt-dep_amt;
                   postDataEntry_text = "Assume New Bal Fwd";
                   return true;}
    else
    if(total_amt > dep_amt)
        {           dep_amt = total_amt;
                   postDataEntry_text = "Assume Deposit";
                   return true;}
    else
    if(total_amt < dep_amt)
        {postDataEntry_text = "The entries in all these fields must
balance.";return false;}
    else
        {postDataEntry_text = " "; return true; }

} // postDataEntryRules()
```

3.4.2 Check Business Centre Privileges

The TPC links to the Transaction Limit, Cash In and Cash Out Limit components (See see Common Transaction Features specifications). The components check the transaction amounts against privileges and if exceeded, prompt for an override – supervisor or operator, based on privilege. After the override, the TPC continues with the transaction processing cycle, setting the field presence bits accordingly.

3.4.3 Set Host Variable Data

These rules are used to set host variable data before the host message is sent.

Common rules and associated values are defined in the Variable Data section of the Host specification.

Following are the values that are unique for this transaction:

- **Amounts**
 - Amount 1 = Deposit
 - Amount 2 = N/A
 - Amount 3 = Amount of cashin or cashout ticket
 - Amount 4 = N/A
- **Trancode**
 - If all deposit is all from checks
Trancode = 'TD'
 - Else if the deposit is all cash
Trancode = 'TDC'
 - Else if the deposit is mixed cash and checks
Trancode = 'TDN'
- **Sort**
 - If checks > 0
Sort = 1
 - Else
Sort = 4

3.4.4 Process Host Response Code

These rules specify actions performed in response to codes returned by the host.

Common rules and associated values are defined in the Response Code section of the Host specification.

Following are the values that are unique for this transaction:

- **If Response Code = 01** - Show the Accepted Transaction display and continue with the transaction processing cycle.
- **If Response Code = 02** – Abort the transaction processing cycle and link immediately to the Abort transaction.
- **If Response Code = anything else** – Without changing the underlying transaction display,
 - Restart the transaction processing cycle.
 - Prompt the operator to enter a teller override.
 - Set the override field presence bit.
 - Set the REACTION_CODE DDW to the last response code and.
 - Resend to the host.

3.4.5 Process Totals

These rules specify total actions performed at the end of this transaction.

Common rules and associated values are defined in the Total section of the Common Business Rules specification.

Following are the values that are unique for this transaction:

Cash += Deposit – Checks

If Checks > 0 then...

- **Sort 1 Amount += Deposit**
- **Sort 1 Item Count += 1**

Else

- **Sort 4 Amount += Deposit**
- **Sort 4 Item Count += 1**

Pay Get Subtotal += Deposit – Checks

3.4.6 Print Ticket

These rules specify ticket(s) printed for this transaction.

Common rules and associated values are defined in the Print section of the Common Business Rules specification.

Following are print lines that are unique for this transaction:

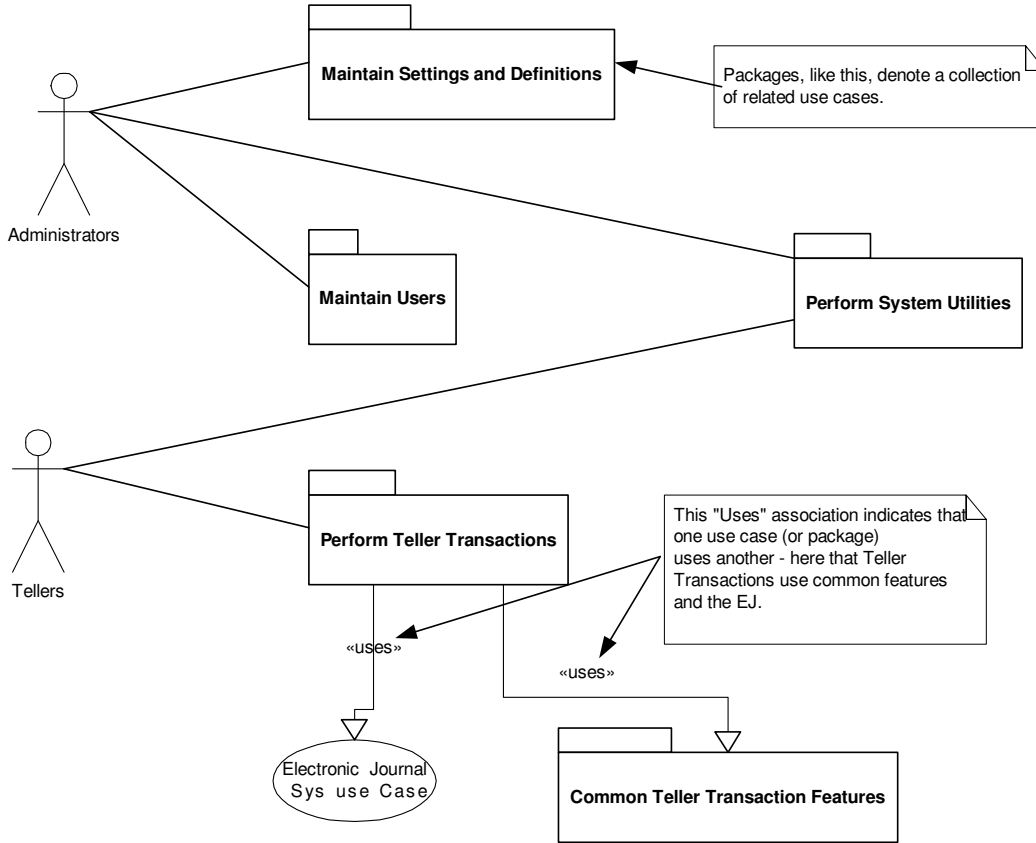
Print Line 3 = “DDA Deposit”

Print Line 4 = deposit

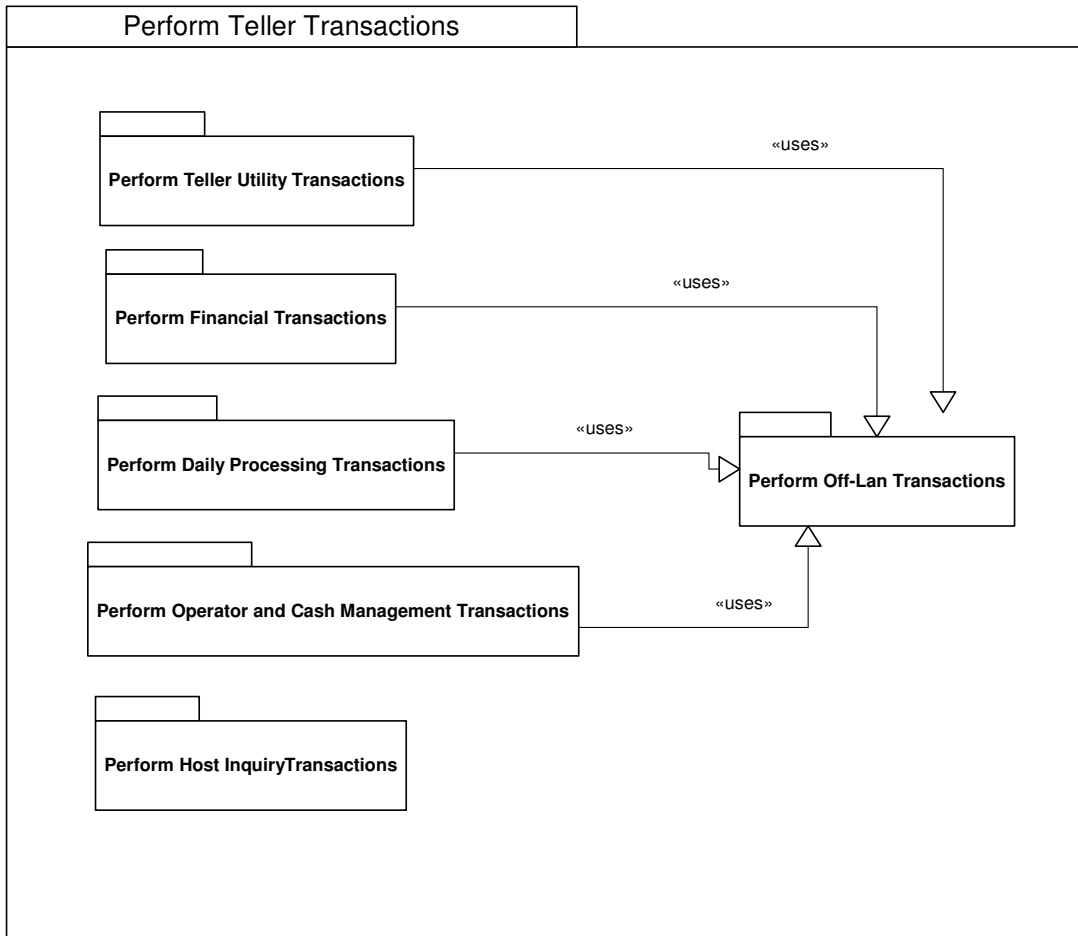
Note: Remaining documents and tickets are printed at the end of Customer Session.

4.0 Relationships

4.1 Overall System



4.2 Teller Transactions



4.3 Common Transaction Features

